



129 WILTON ROAD

VICTORIA

8,091 - 24,397 sq ft of new contemporary CAT A and fully fitted office space available



129 WILTON ROAD, VICTORIA

DESIGNED FOR BUSINESS

129 Wilton Road offers up to 24,397 sq ft of high-quality, CAT A and fully fitted workspace. The space has been thoughtfully designed providing collaborative and quiet workspace with break out zones and meeting rooms on each fully fitted floor. The building boasts a terrace on the 1st floor and a fitness studio located on the ground floor along with excellent end-of-trip facilities.



Reception and welcome area







129 WILTON ROAD, VICTORIA



Typical meeting room



Typical on floor reception



Typical kitchen

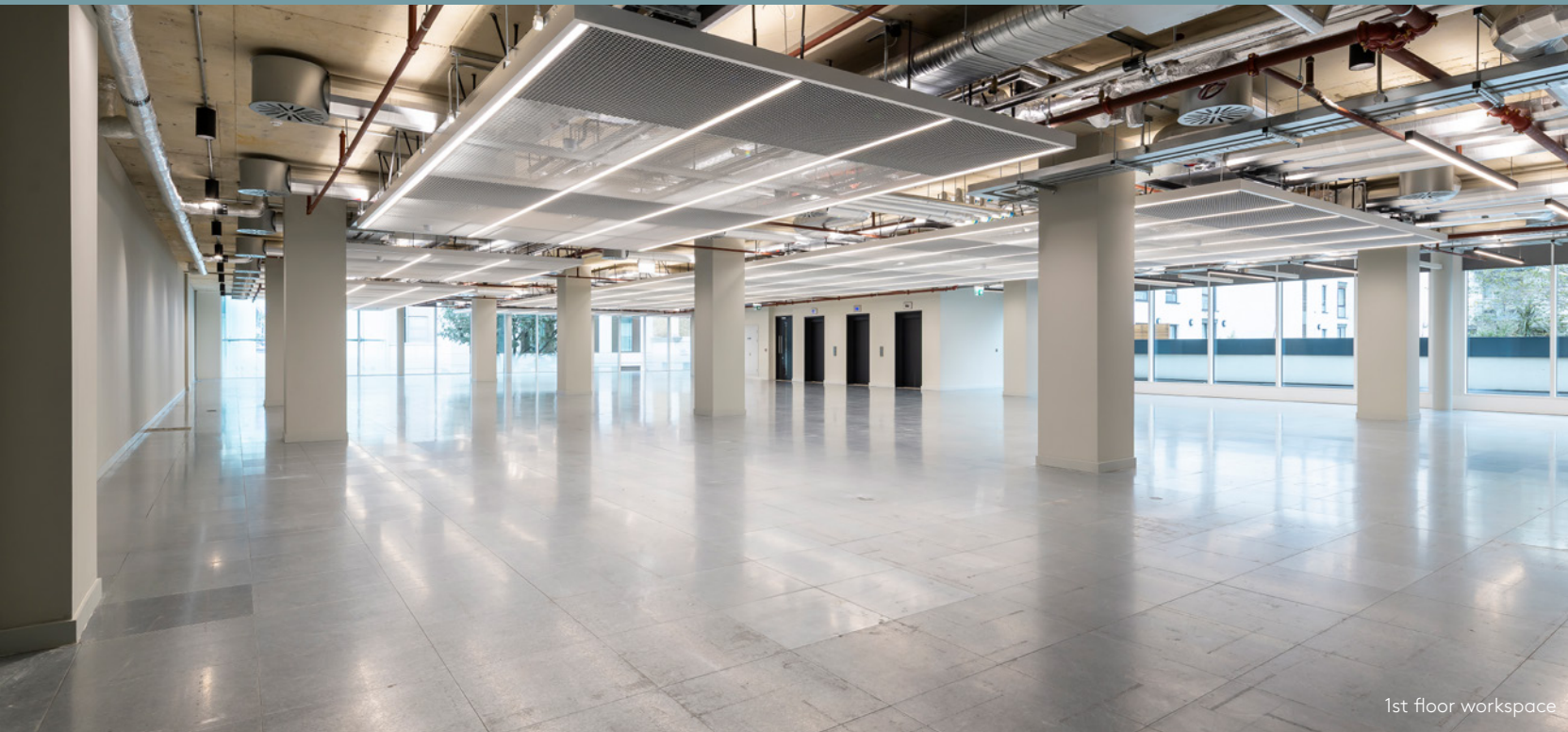




129 WILTON ROAD, VICTORIA



1st floor workspace



1st floor workspace



HIGHLIGHTS



Fully fitted 4th & 5th floors



All electric



Brand new end-of-trip facilities



EPC A rating



Ceiling heights of 2.8m floor to
rafts and 3.3m floor to soffit



New LED lighting



1st floor Cat A refurbishment



Fitness studio located
on the Ground floor



Terrace on the 1st floor



4-pipe fan coil air-conditioning



Refurbished reception
and entrance



129 WILTON ROAD, VICTORIA

AVAILABILITY

Floor	Sq ft	Fit-out	Available
5TH	8,093	Fully fitted	Now
4TH	8,091	Fully fitted	Now
1ST	8,213	CAT A	Now
Total	24,397		



Breakout area and kitchen



129 WILTON ROAD, VICTORIA



Locker and changing facilities



Bike storage

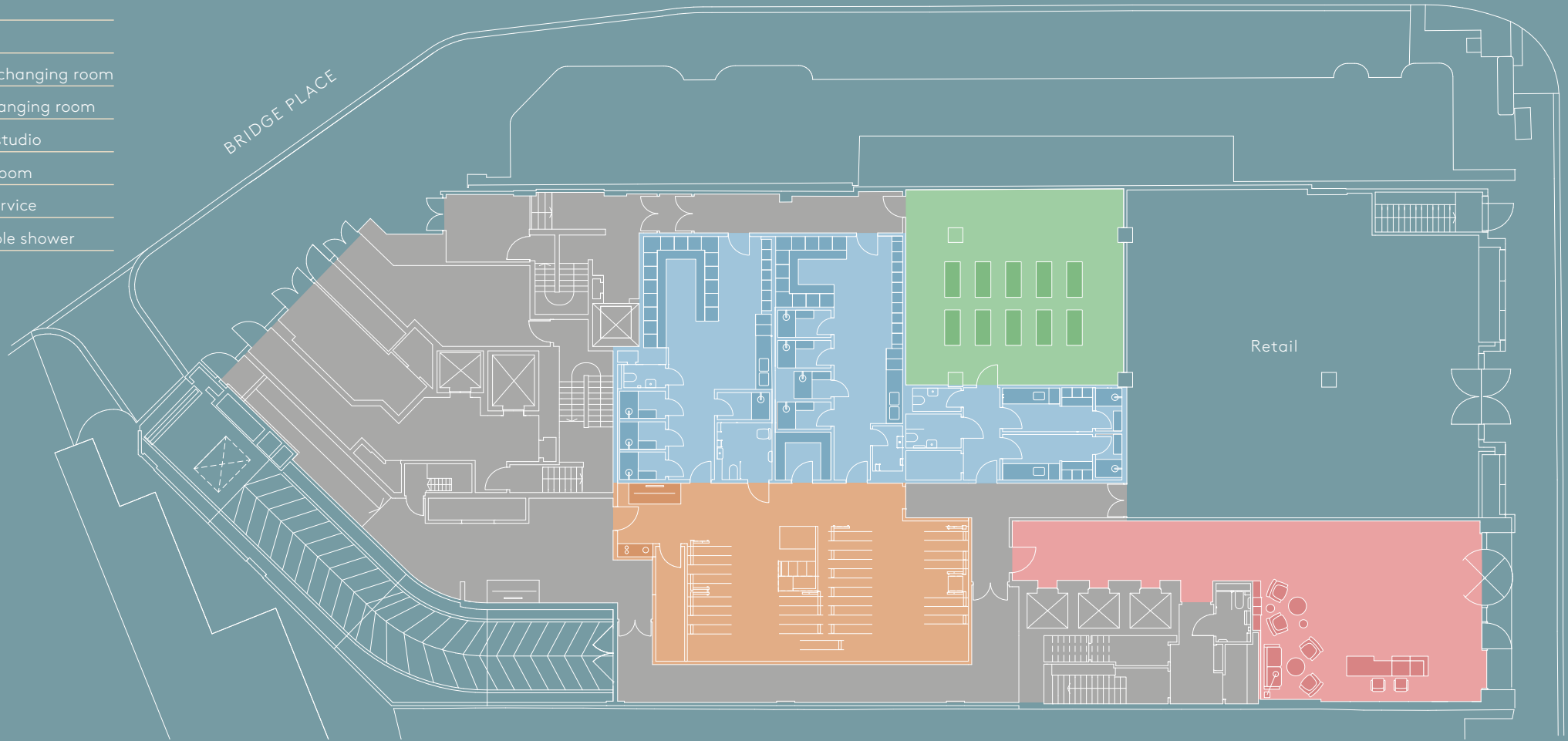


Shower



GROUND FLOOR PLAN

- 100 Bike racks
- 11 Showers
- 119 Lockers
- 1 Female changing room
- 1 Male changing room
- 1 Fitness studio
- 1 Drying room
- Towel service
- 1 Accessible shower

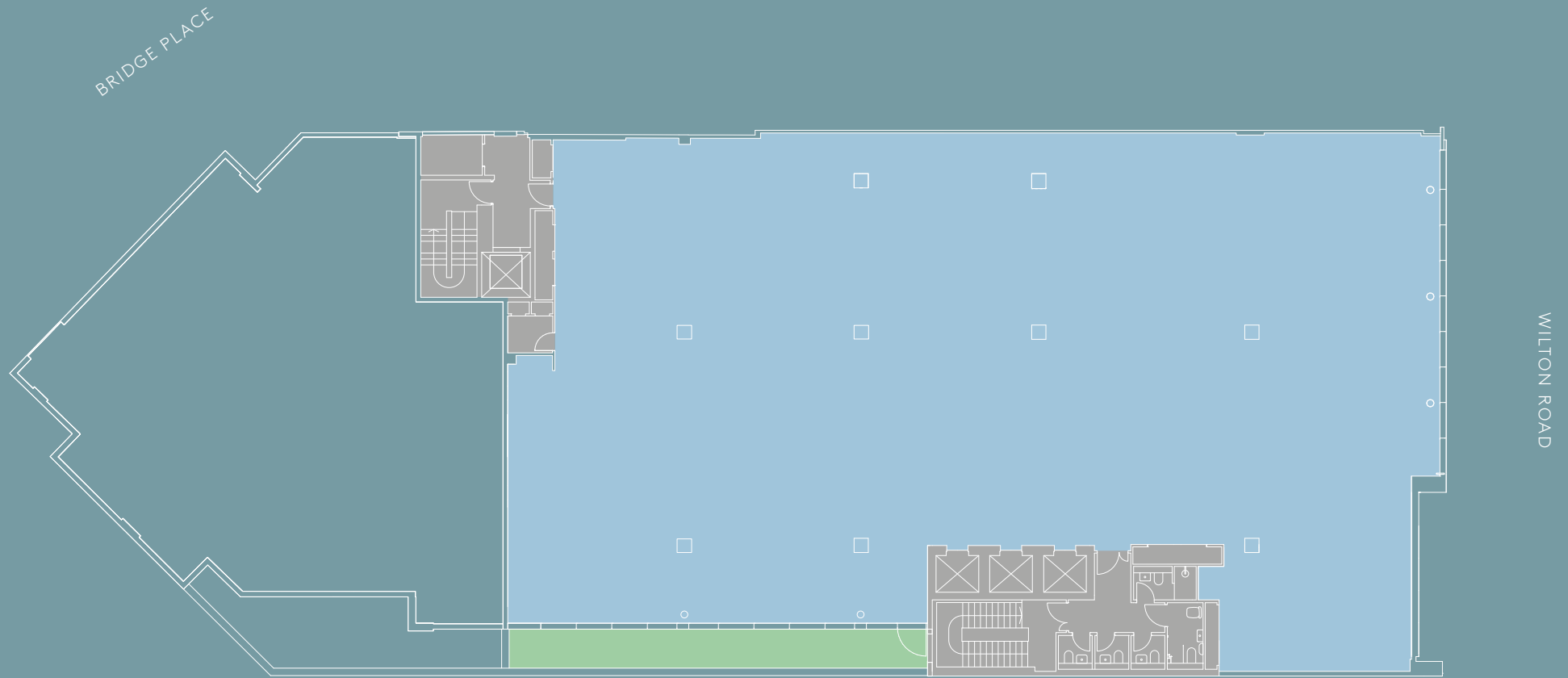


■ Reception
 ■ Fitness studio
 ■ Showers & changing rooms
 ■ Cycle store
 ■ Core



1ST FLOOR PLAN

8,213 SQ FT



Office area Terrace Core

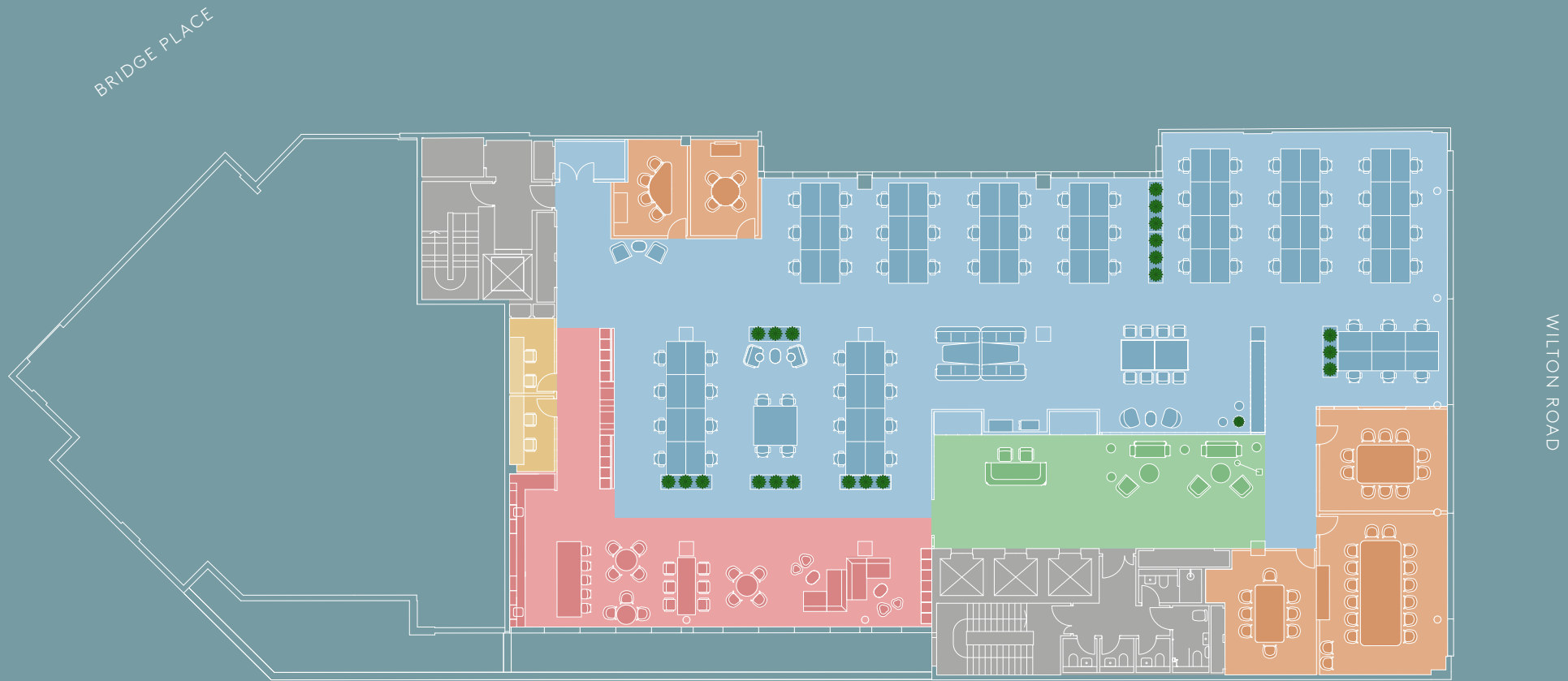


4TH & 5TH FLOOR PLAN

4th Floor 8,091 SQ FT

5th Floor 8,093 SQ FT

70	Workstations
1	Reception
1	Waiting area
5	Meeting rooms
2	Quiet rooms/ Meeting booths
1	Breakout area
1	Teapoint



■ Office area
 ■ Meeting rooms
 ■ Kitchen & breakout area
 ■ Reception & waiting area
 ■ Quiet rooms
 ■ Core



129 WILTON ROAD, VICTORIA

SPOILT FOR CHOICE

129 Wilton Road sits in the heart of Victoria, surrounded by exciting new retail and dining hotspots, including the popular Cardinal Place, Nova and Eccleston Yards. Numerous green spaces are moments away for some relaxation and Victoria Station is right on the doorstep for unbeatable connectivity.



Ebury Street



Buckingham Palace



Eccleston Yards



Nova



Cardinal Place



RESTAURANTS

- Muse by Tom Aikens
- Olivomare
- Harry's
- The Soak
- The Goring Dining Room
- Timmy Green
- Bone Daddies
- Nova Food Court
- Market Halls Victoria
- Bon Gusto
- Quilon
- Urban Greens
- Chez Antionette
- Camino
- The Ivy
- Yaatra
- Boisdale of Belgravia
- Eccleston Yards
- Hatch 77
- Vincent Rooms
- Chucs

HOTELS

- The Goring
- Hotel 41
- The Guardsman
- Taj 51
- St. Ermin's
- The Wellington

LEISURE

- Buckingham Palace
- The Royal Mews
- The Guards Museum
- Victoria Palace Theatre
- Curzon
- Westminster Cathedral
- Eccleston Yards

BARs

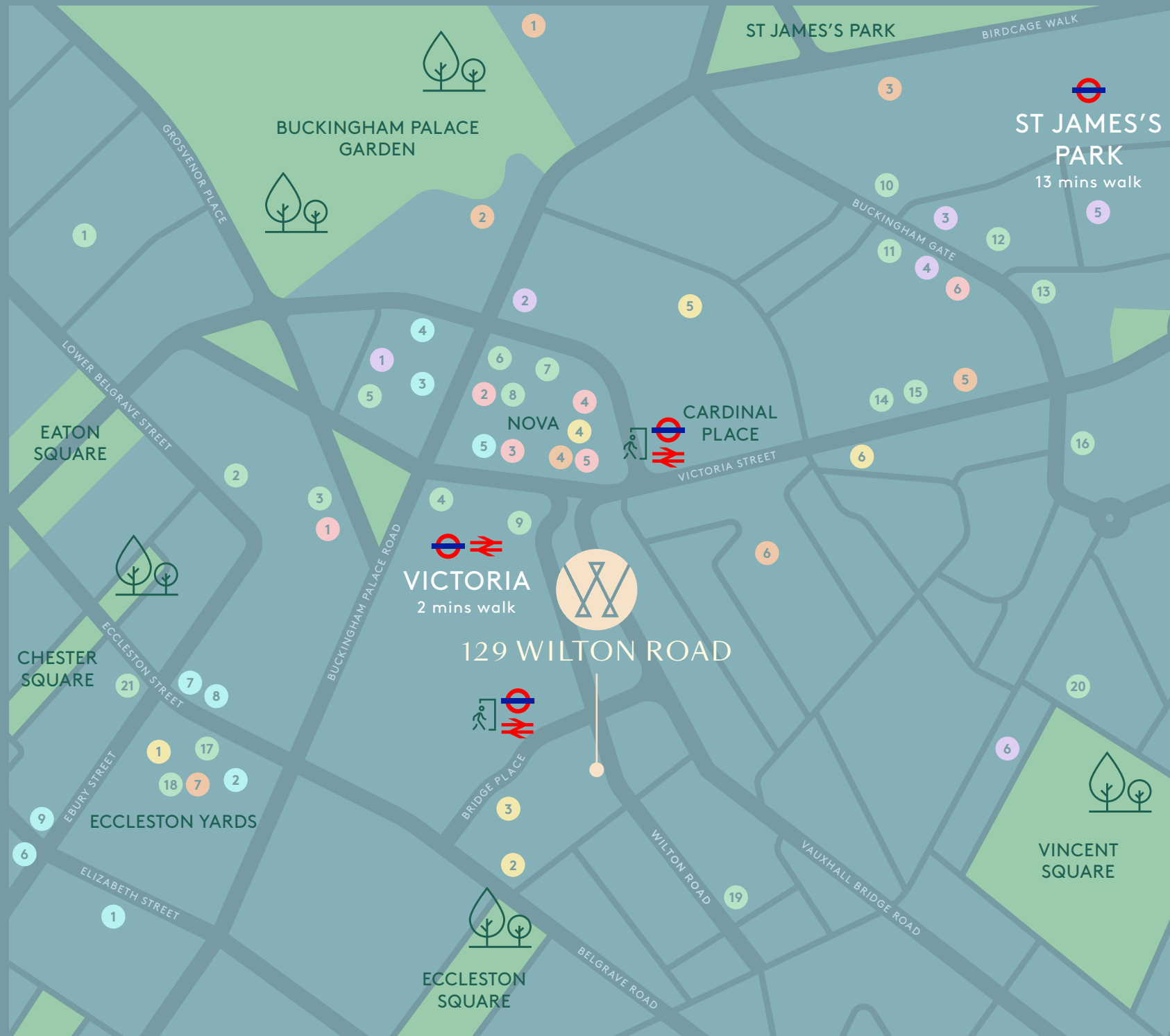
- The Alchemist
- Vagabond
- Greenwood
- Flight Club
- Pavlova's
- The Hampton's Bar

CAFÉS

- Koub
- Joe & The Juice
- Gail's
- The English Rose
- Ole & Steen
- Peggy Porschen
- The Acai Girls
- Green Cafe
- Tom Tom Coffee House

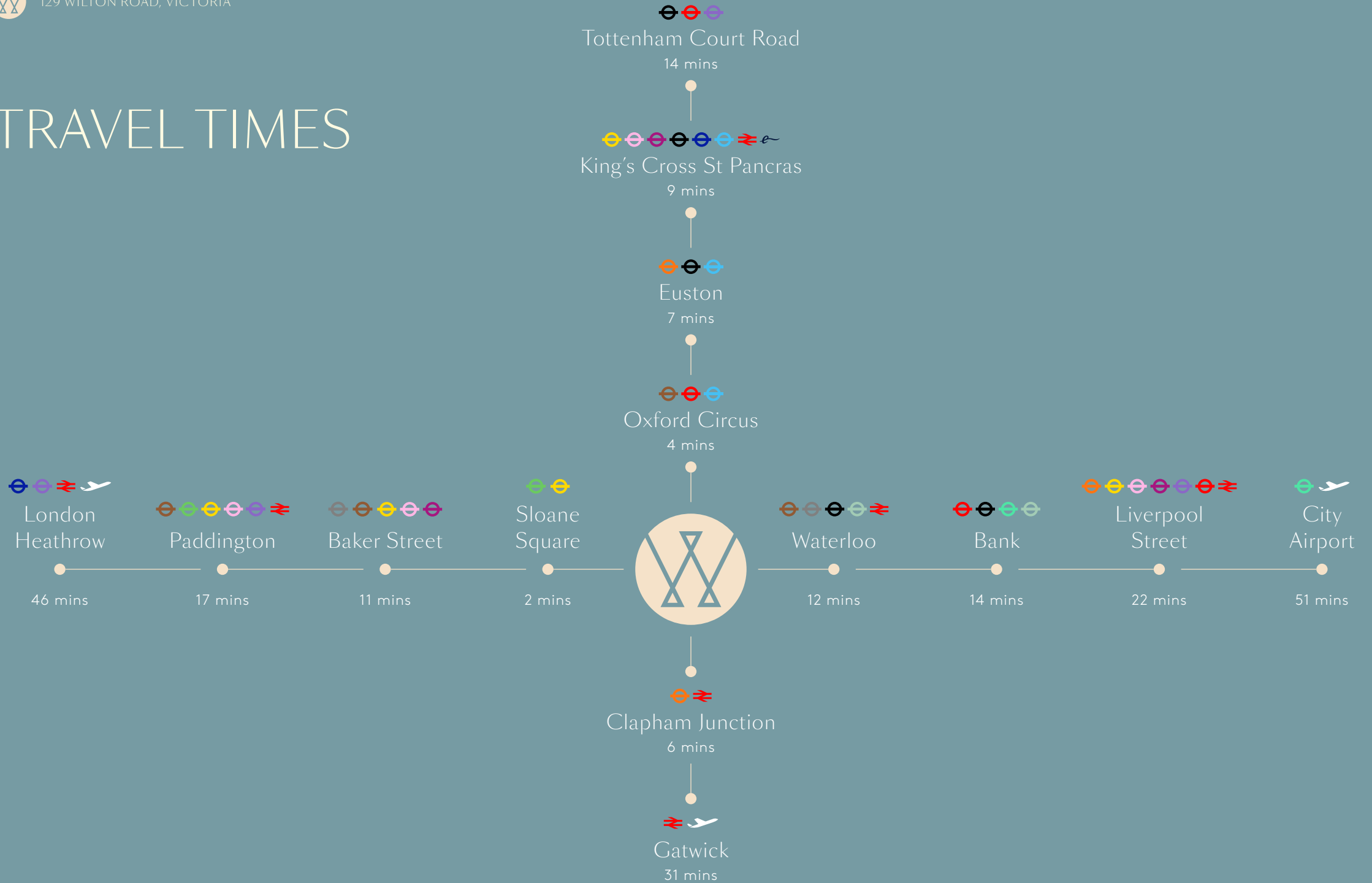
GYMS

- Barry's
- Manor
- Frame
- 1Rebel
- City Athletic
- Gymbox





TRAVEL TIMES



*Calculated using Google from Victoria station



129 WILTON ROAD

VICTORIA



Angus Tullberg

07976 256 487

angus.tullberg@savills.com

Phoebe Thurlbeck

07443 267 817

phoebe.thurlbeck@savills.com

Dan Brown

07710 249 287

dan.brown@workthere.com

Tom Leahy

07955 147 734

tom.leahy@workthere.com

Important notice relating to the Misrepresentation Act 1967 and the Property Misdescriptions Act 1991: (i) the particulars are set out as a general outline only for guidance of intending purchasers or lessees and do not constitute, nor constitute part of, an offer or contract (ii) all descriptions, dimensions, references to condition and necessary permission for use and occupation, and other details are given in good faith and are believed to be correct, but any intending purchasers or occupiers should not rely on them as statements or representations of fact, but must satisfy themselves by inspection or otherwise as to the correctness of each of them. May 2026

Marketing: [Stuart Chapman Design](#)