



GROUND FLOOR PLAN

- 100 Bike racks

- 11 Showers

- 119 Lockers

- 1 Female changing room

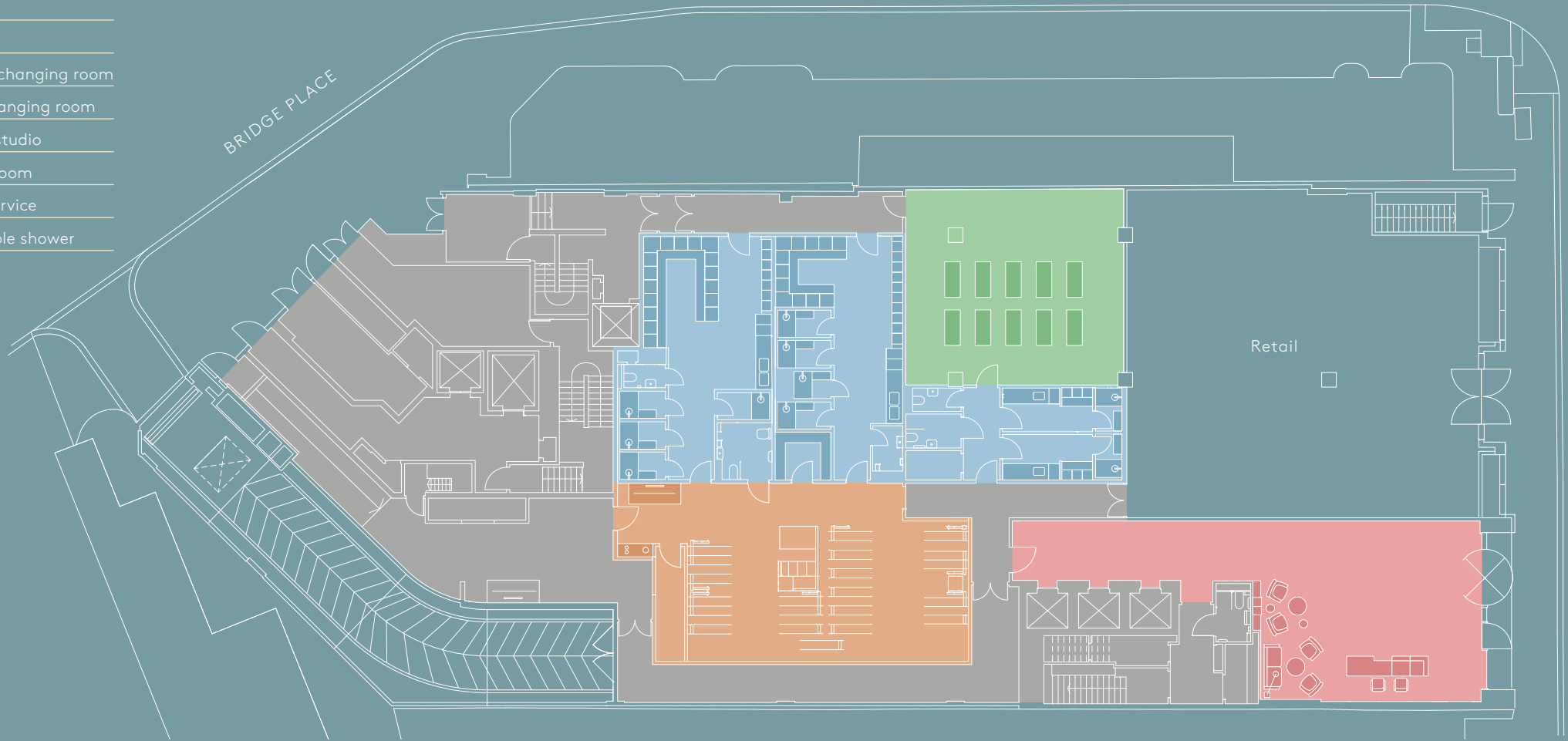
- 1 Male changing room

- 1 Fitness studio

- 1 Drying room

- Towel service

- 1 Accessible shower



■ Reception
 ■ Fitness studio
 ■ Showers & changing rooms
 ■ Cycle store
 ■ Core